

Itea

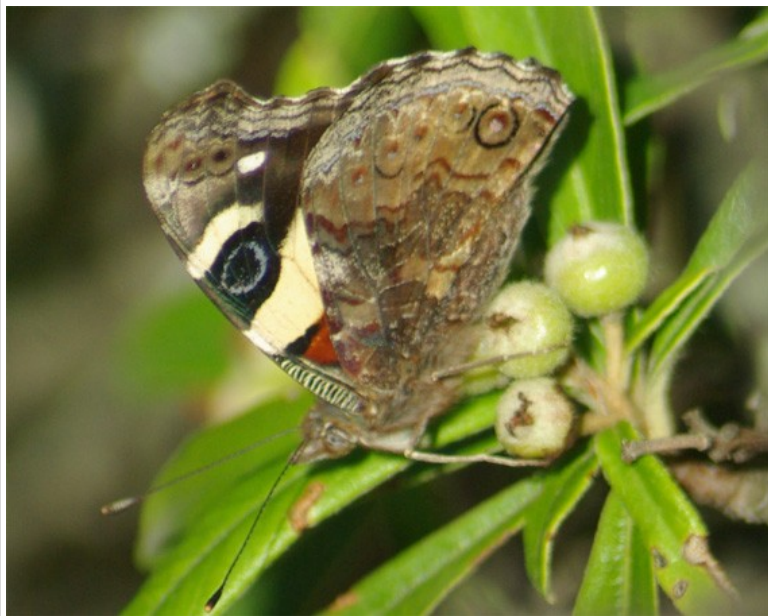


Yellow Admiral feeding on blossom

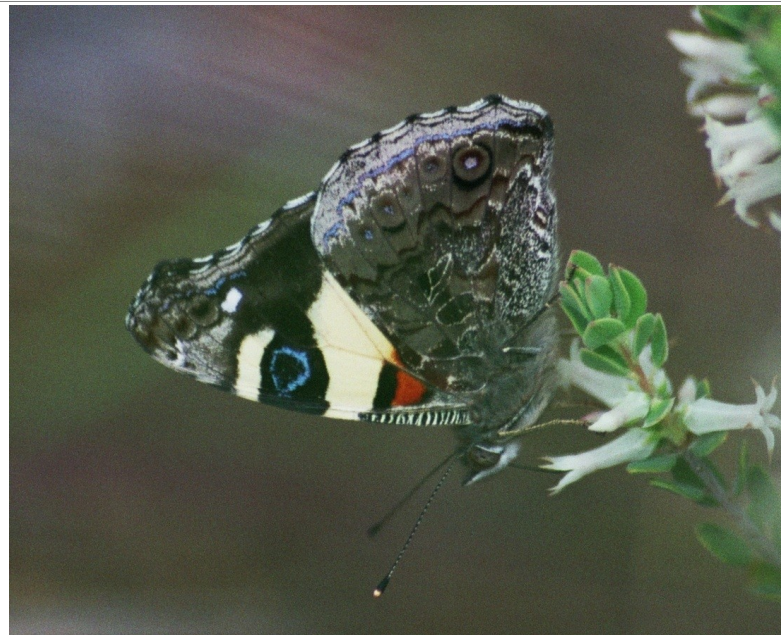
Yellow Admiral, Australian Admiral

Vanessa itea

One of the most handsome garden butterflies, the Australian Admiral is most common around stinging nettles, as this is what its caterpillars eat! It flies from Spring to Autumn, and is always in a great hurry. However in the morning the male will pause to feed, or to rest on a tree trunk, nose-down, at about 2 m, looking for a mate. Later in the day they seem to prefer flying around the tree-tops. The sexes are almost indistinguishable.



Underside of the Yellow Admiral



Underside of a Yellow Admiral. Colour differences between this and the previous image are more photographic than real!