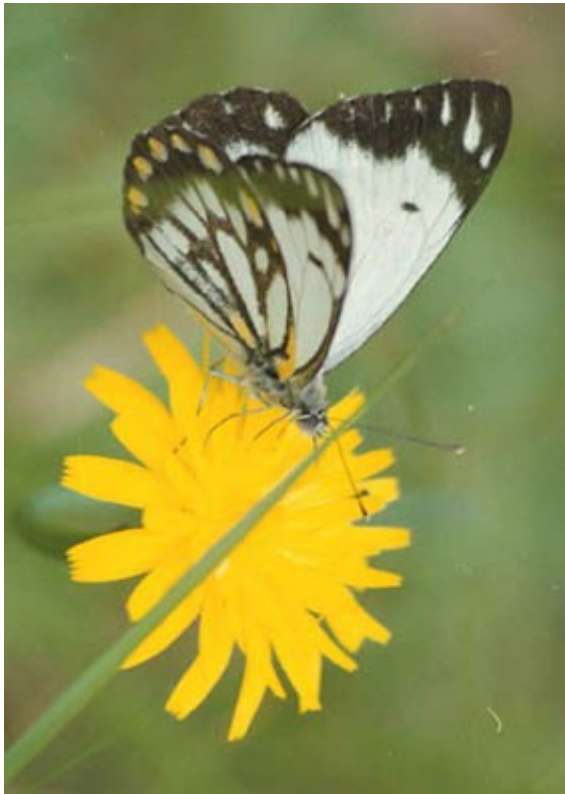


Java



30 mm

A male Caper White on a Dandelion

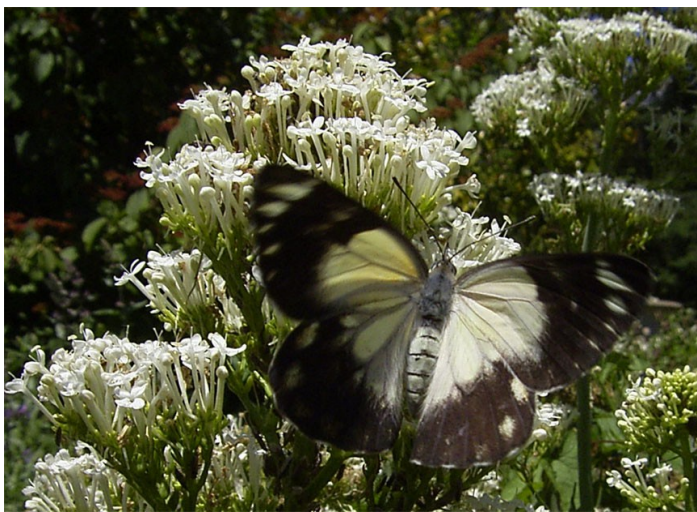


A male Caper White feeding

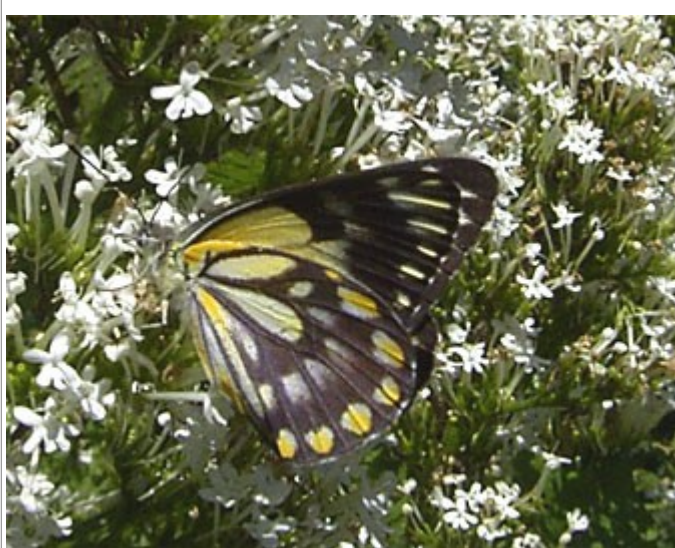
Caper White

Belenois java

The Caper White generally appears in the late spring. It flies in gardens, forest and grasslands, for in southern New South Wales it is a migrant, coming to us from its breeding grounds in central-west New South Wales or anywhere further north. Sometimes they lay eggs on garden *Capparis spp* (Caper Trees), but they don't usually establish a breeding colony. The females, below, are darker than the males, and there is quite a wide variation in the extent of the dark margins to the wings of both sexes.



Female Caper White



Female Caper White



Female Caper White, dark form