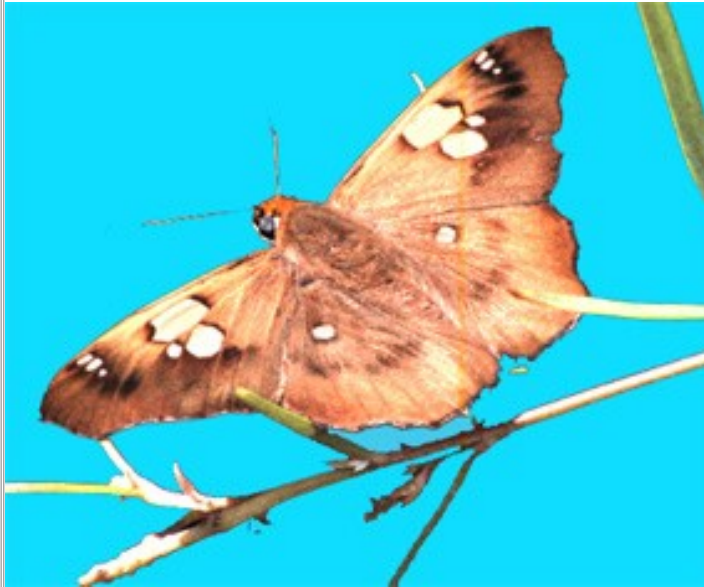


Repanda



20 mm

A male Bronze Flat

Bronze Flat, Eastern Flat

Netrocoryne repanda repanda

The Bronze Flat may be seen feeding at flowers in the morning, or darting around hill tops later in the day. It is mainly a summer butterfly on the NSW south coast. Its caterpillars eat a variety of native plants, including Kurrajong.

Unlike most butterflies, the 'Flats' generally rest with wings outspread. Other types generally only do this when they are cold and need to warm up, although the Meadow Argus is often seen with wings out-spread. Flats belong in the Family HesperIIDae, many of which rest with at least the hind-wings flat.



A female Bronze Flat feeding from a Tea-tree flower



Underside of a Bronze Flat